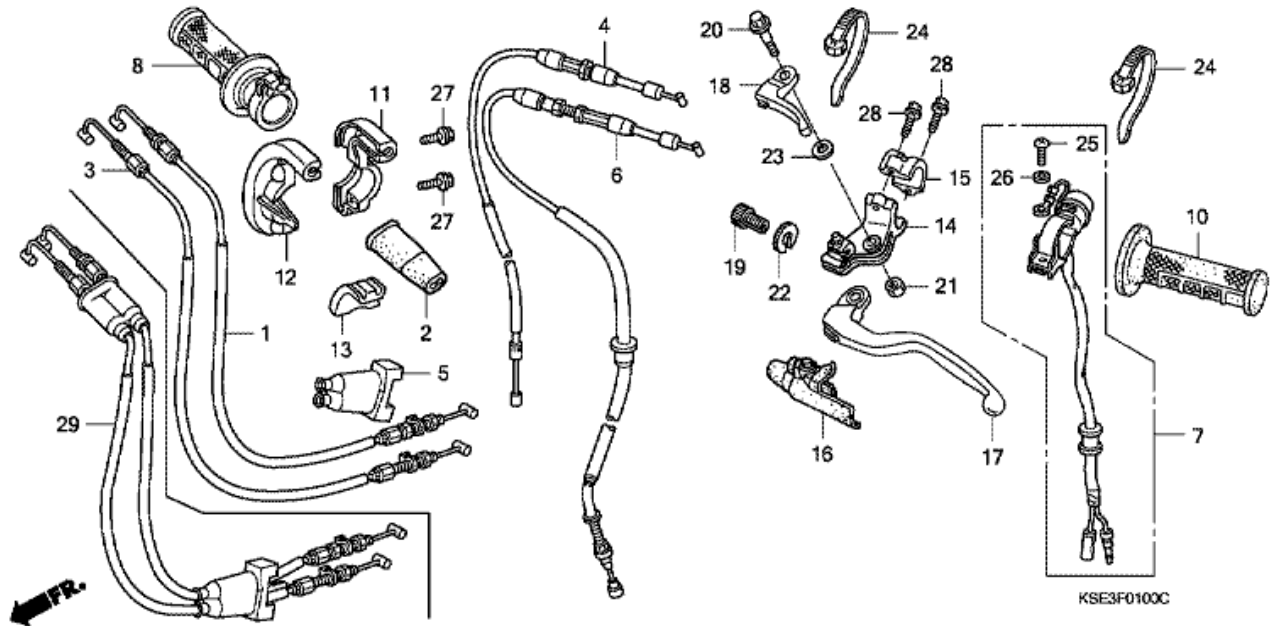


CRF150RB CRF150RB9 2009 ED
F-1 HANDTAGSSPAK/BRYTARE/KABEL



CRF150RB CRF150RB9 2009 ED

F-1 HANDTAGSSPAK/BRYTARE/KABEL

| Nr | Artikelnummer | Beskrivning | Antal | Best. antal | Rep.antal |
|----|----------------|---------------------------------|-------|-------------|-----------|
| 4 | 17950-KSE-000 | KABEL KOMP., VARM STARTMOTOR | 001 | 0 | 0 |
| 6 | 22870-KSE-000 | KABEL KOMP., KOPPLING | 001 | 0 | 0 |
| 7 | 35130-KSE-671 | BRYTARE, MOTORSTOPP | 001 | 0 | 0 |
| 8 | 53140-KSE-000 | HANDTAG KOMP., GAS | 001 | 0 | 0 |
| 10 | 53166-GBF-J60 | HANDTAG, VÄ. HANDTAG | 001 | 0 | 0 |
| 11 | 53167-MEB-672 | HÖLJE, GAS ÖVRE | 001 | 0 | 0 |
| 12 | 53168-MEB-671 | HÖLJE, GAS UNDRE | 001 | 0 | 0 |
| 13 | 53169-KSE-000 | SKJUTREGLAGE, GASVAJER | 001 | 0 | 0 |
| 14 | 53172-MEB-670 | KONSOL , V. HANDTAGSSPAK | 001 | 0 | 0 |
| 15 | 53174-KCE-670 | HÅLLARE, V. SPAKKONSOL | 001 | 0 | 0 |
| 16 | 53177-MEB-670 | SKYDD, VÄ. HANDTAGSSPAK | 001 | 0 | 0 |
| 17 | 53178-MAC-740 | SPAK, VÄ. STYRHANDTAG | 001 | 0 | 0 |
| 18 | 53190-MEB-670 | SPAK, VARM STARTMOTOR | 001 | 0 | 0 |
| 19 | 53192-203-000 | BULT, KOPPLING LEDNINGJUSTERING | 001 | 0 | 0 |
| 20 | 90112-MEB-670 | BULT, SPAK LEDBULT (NSHF) | 001 | 0 | 0 |
| 21 | 90301-782-000 | MUTTER, U, 6MM | 001 | 0 | 0 |
| 22 | 90321-315-670 | MUTTER, FASTSÄTTA | 001 | 0 | 0 |
| 23 | 90501-KV6-670 | BRICKA, ENKEL, 7MM | 001 | 0 | 0 |
| 24 | 90650-KV6-003 | BAND, WIRE 95MM | 002 | 0 | 0 |
| 25 | 93500-04012-1A | SKRUV, KONISKT, 4X12 | 001 | 0 | 0 |
| 26 | 94111-04000 | BRICKA, FJÄDER, 4MM | 001 | 0 | 0 |
| 27 | 96001-06018-07 | BULT, FLÄNS, 6X18 | 002 | 0 | 0 |
| 28 | 96001-06022-00 | BULT, FLÄNS, 6X22 | 002 | 0 | 0 |
| 29 | 17900-KSE-710 | GASWIRE | 001 | 0 | 0 |